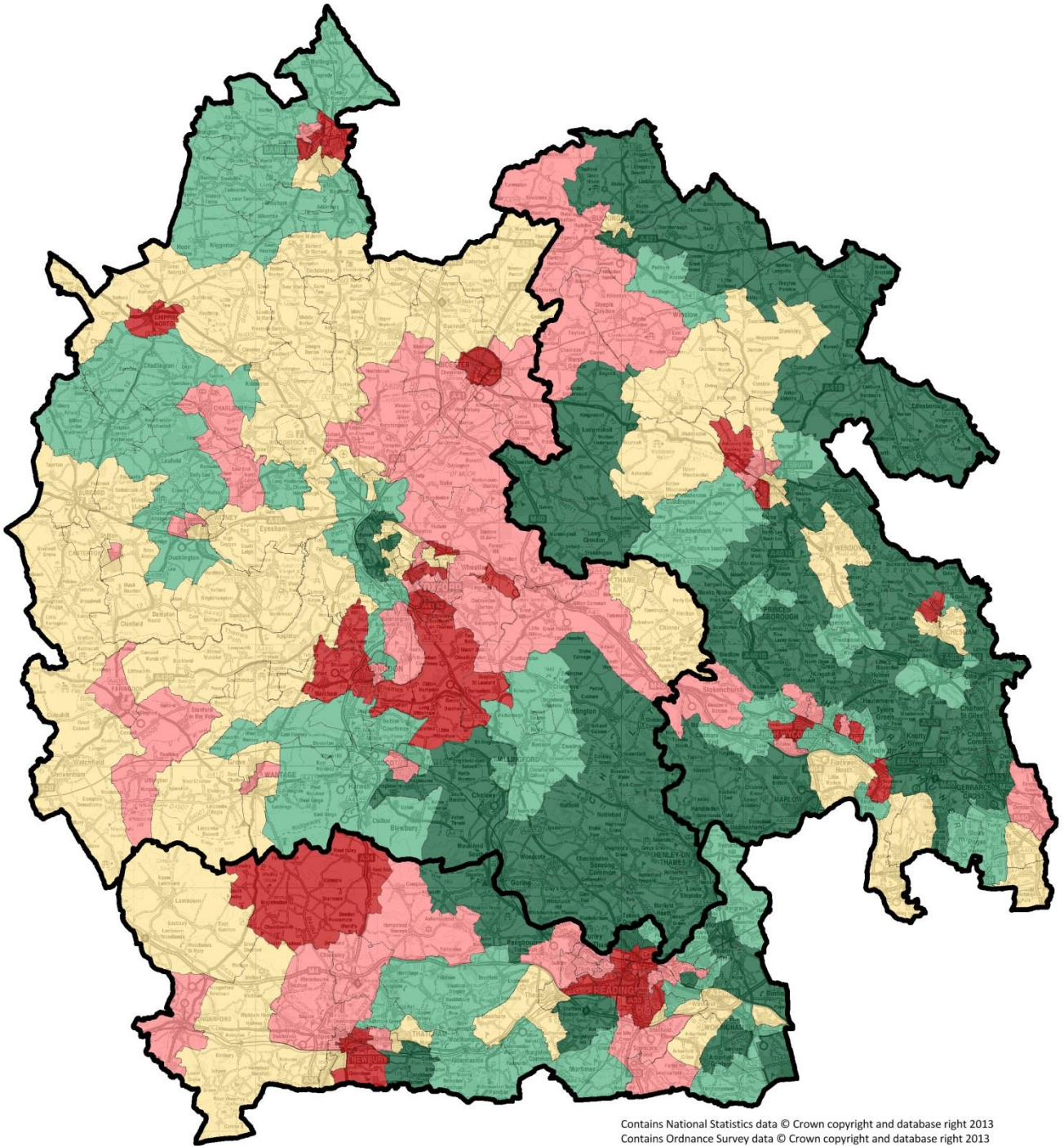


GCSE Achievement



Contains National Statistics data © Crown copyright and database right 2013
Contains Ordnance Survey data © Crown copyright and database right 2013

Produced by Buckinghamshire Public Health (publichealth@bucksc.gov.uk), 03May17

GCSE Achievement by Ward, % Population-weighted quintiles

Dark Green	Q1: 74.0 - 89.7
Medium Green	Q2: 67.8 - 73.4
Yellow	Q3: 60.2 - 67.7
Pink	Q4: 53.7 - 60.0
Dark Red	Q5: 33.0 - 53.5

Population-weighted quintile estimates from ward-level data in Local Health.

Quintile thresholds are adjusted to include all wards with tied indicator values. Wards are allocated to the 'better' quintile.

GCSE achievement

The worst quintile in BOB includes 49 wards (out of 293 wards with recorded data), and makes up 20.1% of the total population. Buckinghamshire has 11 wards in the worst quintile, and the worst ward in BOB, and these are;

- Southcourt (**293**) – worst ranked in BOB
- Oakridge and Castlefield (286)
- Sands (285)
- Bowerdean (281)
- Riverside (280)
- Micklefield (271)
- Walton Court & Hawkslade (268)
- The Wooburns (259)
- Vale (247)
- Ridgeway (246)
- Asheridge Vale and Lowndes (245)

[Rank in brackets, where 293 is worst in BOB]

The population in each quintile, for this indicator (using child/denominator population), is as follows;

Quintile	Population	#Wards
Q1	3,308	66
Q2	3,243	58
Q3	3,413	67
Q4	3,145	53
Q5	3,294	49
Total	16,403	293

For this indicator 742 people in Bucks are in quintile 5 (23% of the quintile); this is lower than expected.

Notes on the indicator

No wards in BOB were suppressed for this indicator.

Methodology/Suppression: No suppression required.

Ward figures are **estimated** from the MSOA level data. Each MSOA is made up of a number of constituent Output Areas, and each of these has been assumed to have the same level of incidence as their 'parent' MSOA. For each Output Area, a numerator and denominator has been estimated by distributing the numerator and denominator of the MSOA, weighted by the relevant population. The numerators and denominators of the Output Areas were then aggregated to wards, in order to calculate the indicator for these geographies.

Definition: Percentage of pupils at end of Key Stage 4, achieving 5 or more GCSEs at grades A*-C (including English and Maths) or equivalent, in schools maintained by the Local Authority, at the end of the academic year.

Source: Department for Education Small area pupil attainment and absence by pupil characteristics in England - academic year 2013 to 2014.